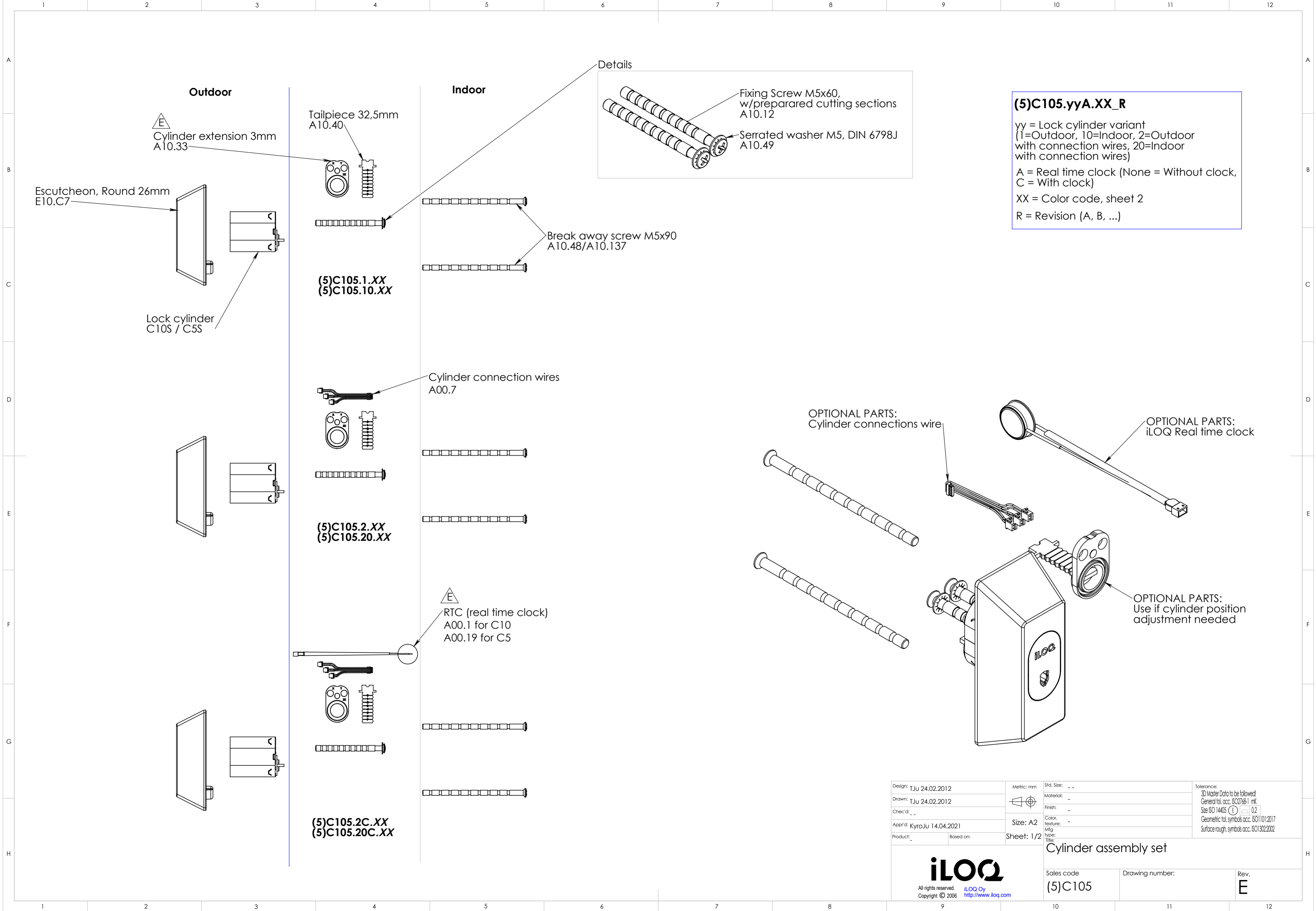


This document and its contents are the property of ILOQ Oy and must not be copied, reproduced or disclosed to any third party without prior written permission. Contravention will be prosecuted.



**(5)C105.yyA.XX\_R**

yy = Lock cylinder variant  
 (1=Outdoor, 10=Indoor, 2=Outdoor with connection wires, 20=Indoor with connection wires)

A = Real time clock (None = Without clock, C = With clock)

XX = Color code, sheet 2

R = Revision (A, B, ...)

Design: TJu 24.02.2012	Metric: mm	Std. Size: --	Tolerance: 3D Master Data to be followed!
Drawn: TJu 24.02.2012		Material: -	General tol. acc. ISO2768-1 mK
Chec'd: -	Size: A2	Finish: -	Size ISO 14405  0.2
Appr'd: KyroJu 14.04.2021	Sheet: 1/2	Color: -	Geometric tol. symbols acc. ISO1101:2017
Product: -	Based on: -	Mfg type: -	Surface rough. symbols acc. ISO1302:2002
<b>iLOQ</b>		<b>Cylinder assembly set</b>	
All rights reserved. ILOQ Oy Copyright © 2006 <a href="http://www.ilq.com">http://www.ilq.com</a>		Sales code <b>(5)C105</b>	Drawing number: <b>E</b>